

Retail Frontage at City Center Wasilla

LOCATED LESS THAN 1/4 MILE FROM NEW SOUTHCENTRAL HOSPITAL IN WASILLA

Brand new building located at 705 Knik-Goose Bay Rd. This is the **LAST** suite available in this building so act quickly! Space boasts large storefront windows, private rest-room, HVAC, ample parking, and amazing signage possibilities for suite fronting KGB.

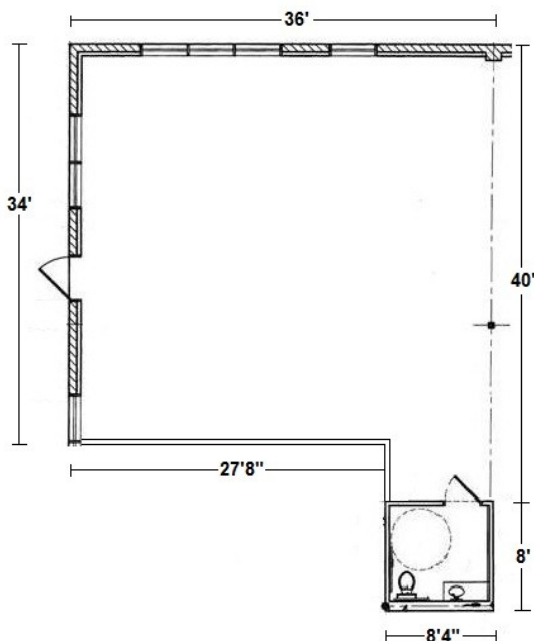
Terms:

- 1,362 Sq. Ft.
- \$1.80 / Sq. Ft.
- \$2,450/ Month
- Tenant pays gas and electric
- Landlord pays water, sewer, trash, landscaping and plowing



Park your retail business in our new modern, eye-catching commercial building.

Great frontage and visibility to Knik-Goose Bay Rd.



Andrew Faiks

Western Enterprises Inc. - Wasilla

617 S. Knik-Goose Bay Rd., Suite C
Wasilla, AK 99654

Phone: **907-631-9155**

E-mail: AndrewF@LeaseAlaska.com

Chad Powelson

Western Enterprises Inc.

4101 Arctic Boulevard, Suite 203
Anchorage, AK 99503

Phone: **907-562-2244**

E-mail: ChadP@LeaseAlaska.com